



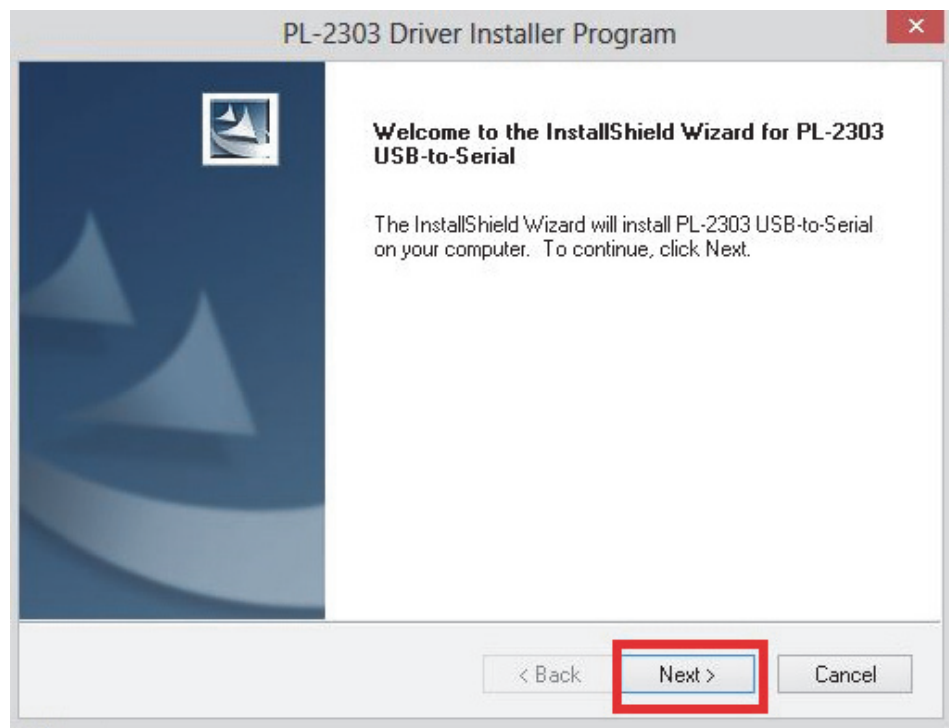
**CARTFT.COM**  
Shop for mobile  
PC- and GPS-Solutions

Power Up Your Car

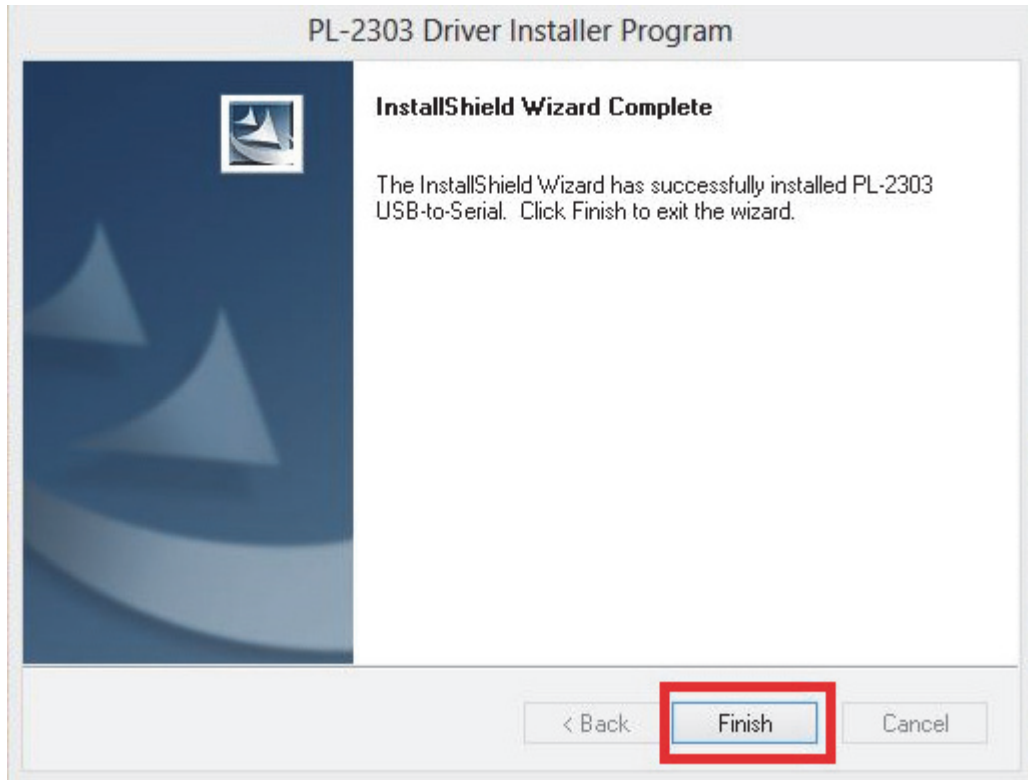
## Installation

GPS Outdoor (WIN8)				Search GPS Outdoor (WIN8)	
Name		Date modified	Type	Size	
setup		10/21/2011 4:07 PM	Application	3,148 KB	

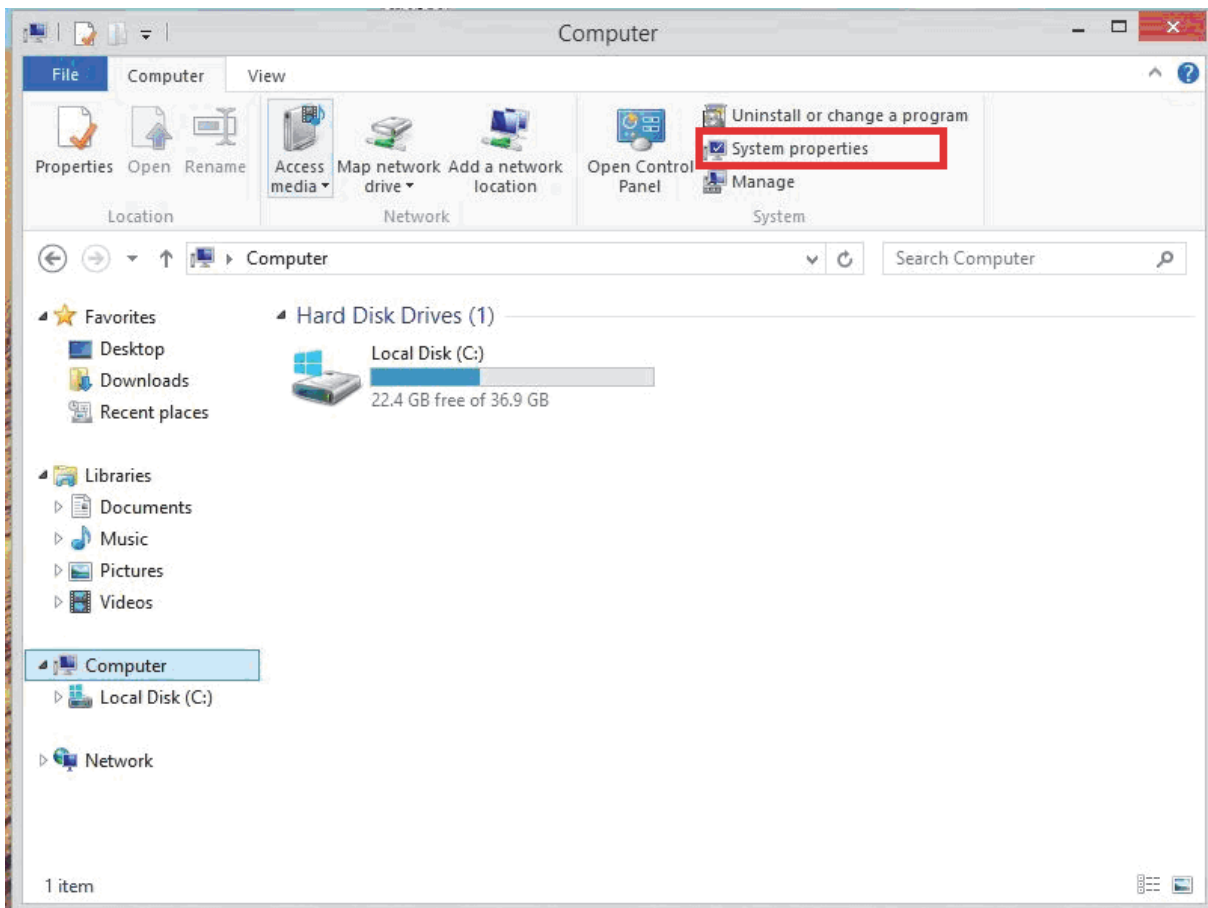
Double click on setup.exe file



Confirm with „Next“



End with „Finish“





**CARTFT.COM**  
Shop for mobile  
PC- and GPS-Solutions

Power Up Your Car

Open Computer and click on Device Manager.

The screenshot shows the Windows 8 'System' page in the Control Panel. The left sidebar contains links to 'Control Panel Home', 'Device Manager' (highlighted with a red box), 'Remote settings', 'System protection', and 'Advanced system settings'. The main content area is titled 'View basic information about your computer' and displays the following information:

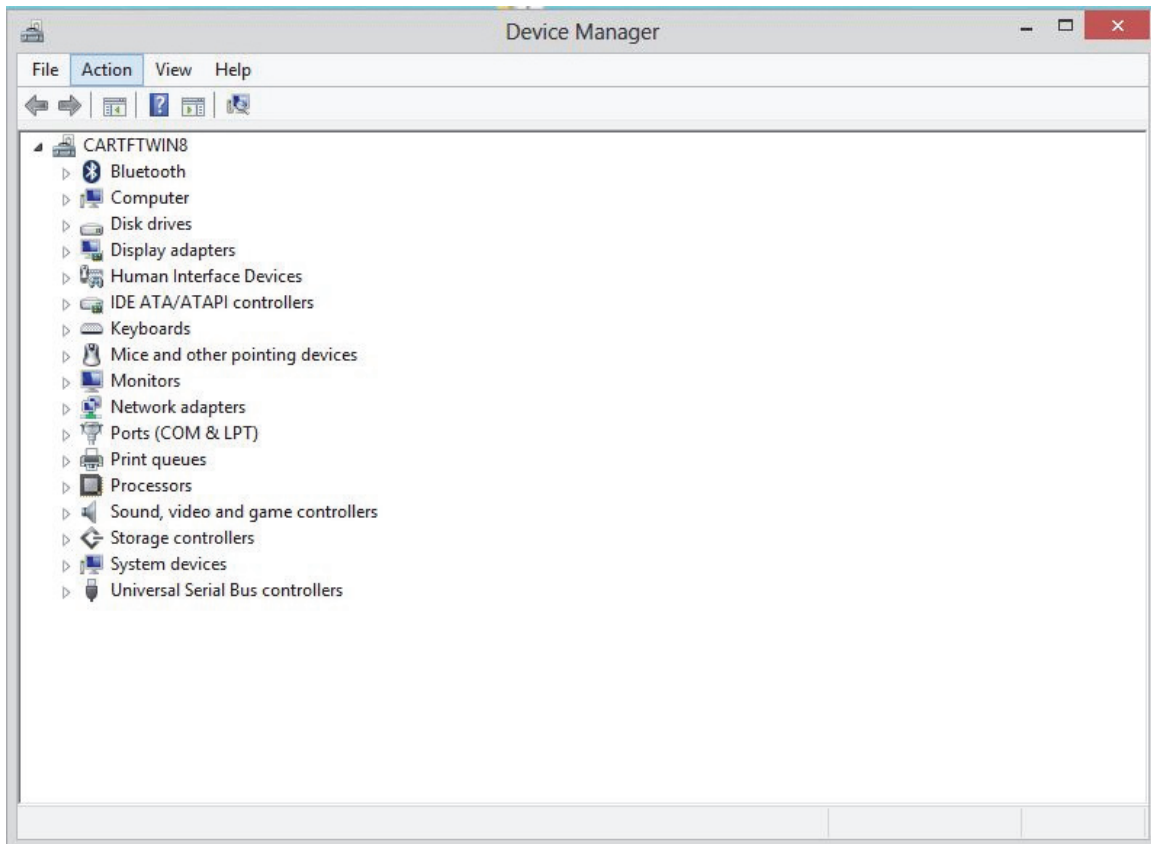
- Windows edition:** © 2012 Microsoft Corporation. All rights reserved. (Windows 8 logo)
- System:**
  - Rating: System rating is not available
  - Processor: Intel(R) Atom(TM) CPU D2550 @ 1.86GHz 1.86 GHz
  - Installed memory (RAM): 2.00 GB
  - System type: 32-bit Operating System, x64-based processor
  - Pen and Touch: No Pen or Touch Input is available for this Display
- Computer name, domain, and workgroup settings:**
  - Computer name: CARTFTWIN8 (with a 'Change settings' link)
  - Full computer name: CARTFTWIN8
  - Computer description:
  - Workgroup: WORKGROUP
- Windows activation:**
  - Windows is activated (with a 'View details in Windows Activation' link)
  - Product ID: [REDACTED]

At the bottom left, under 'See also', there are links to 'Action Center', 'Windows Update', and 'Performance Information and Tools'.

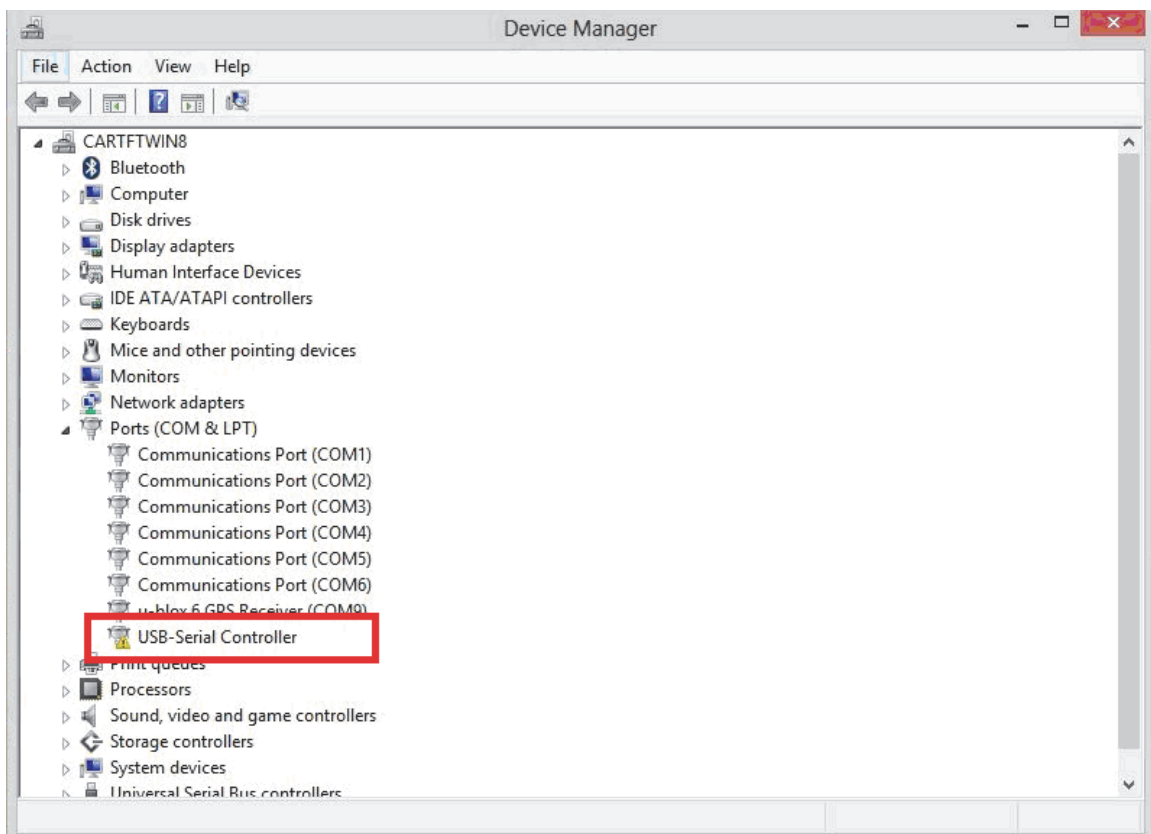


**CARTFT.COM**  
Shop for mobile  
PC- and GPS-Solutions

Power Up Your Car



Connect your GPS receiver to a PC USB port.

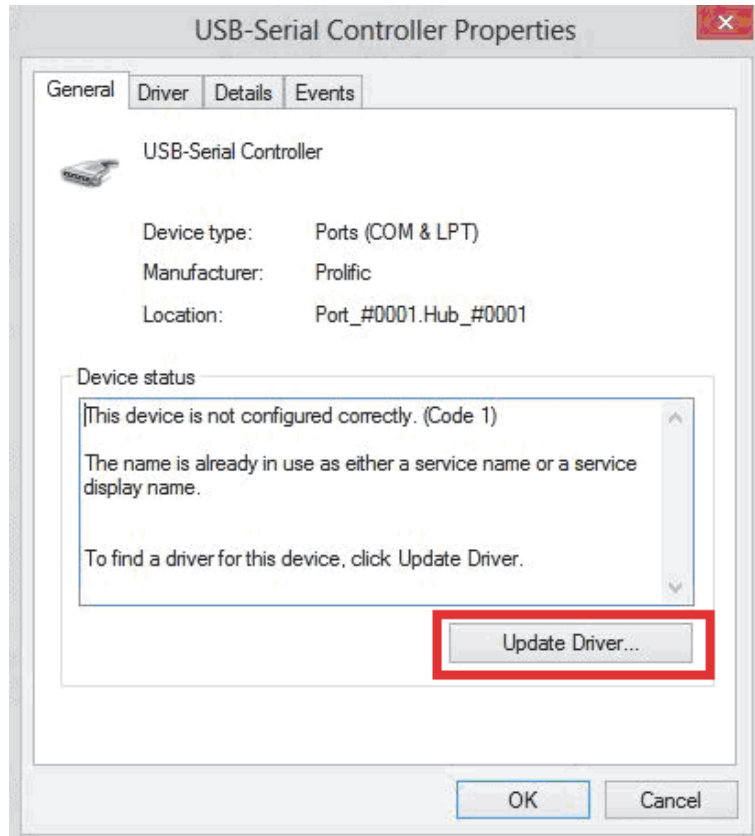




**CARTFT.COM**  
Shop for mobile  
PC- and GPS-Solutions

Power Up Your Car

Right click on this new „USB-Serial Controller“ device and click on „Properties“.

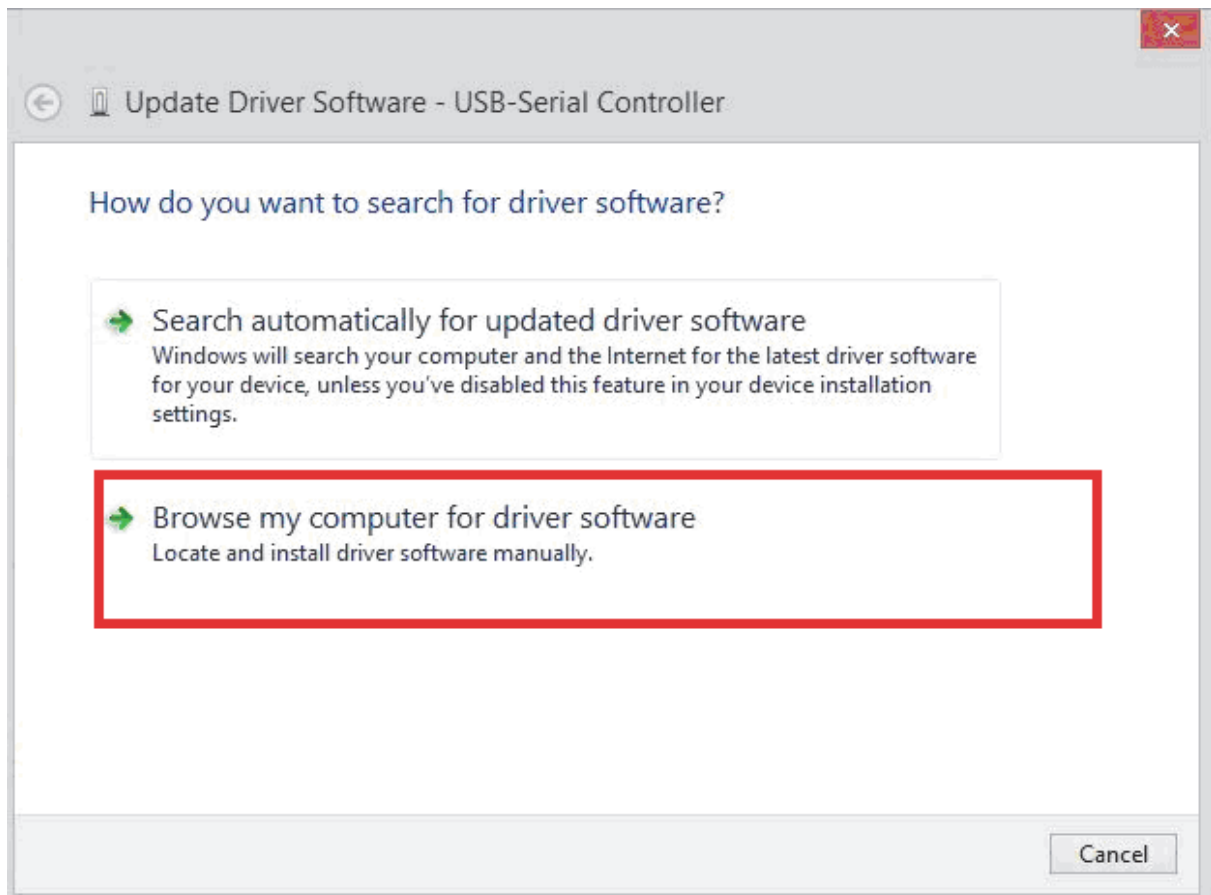


Click on „update driver“.

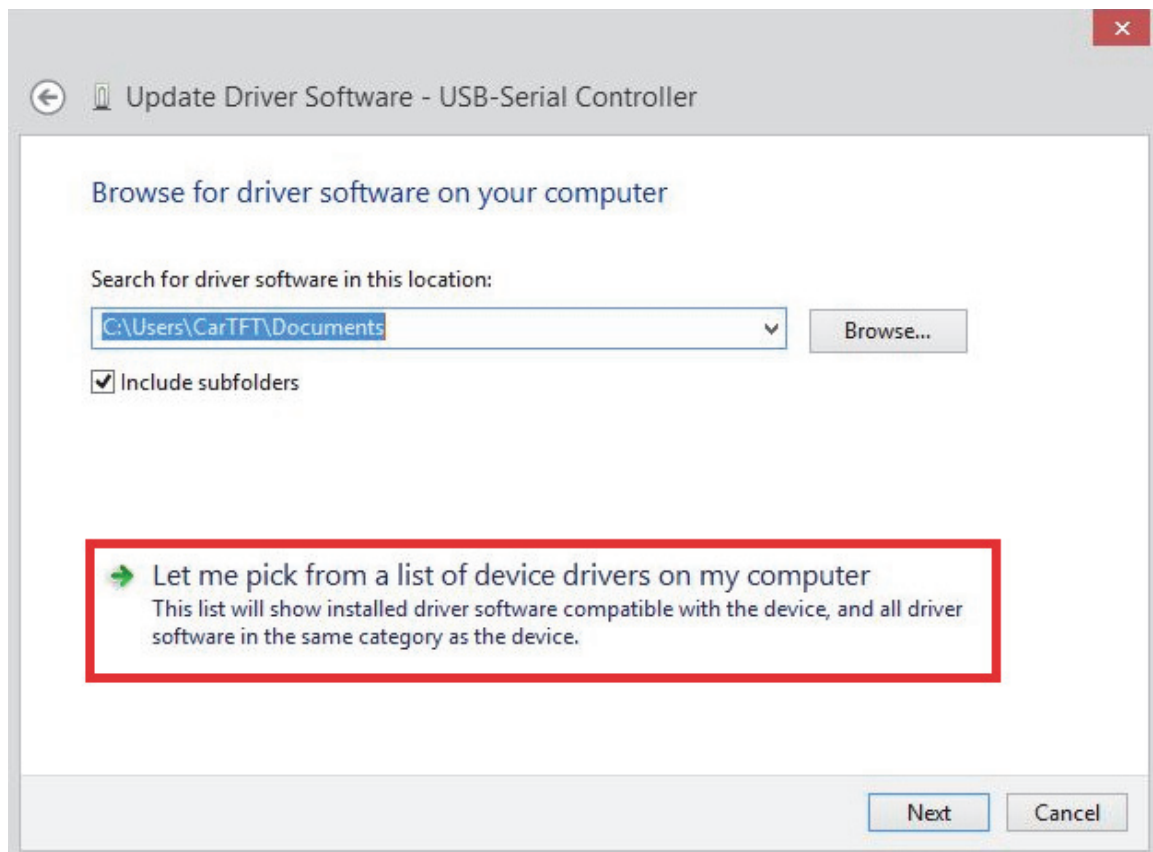


**CARTFT.COM**  
Shop for mobile  
PC- and GPS-Solutions

Power Up Your Car

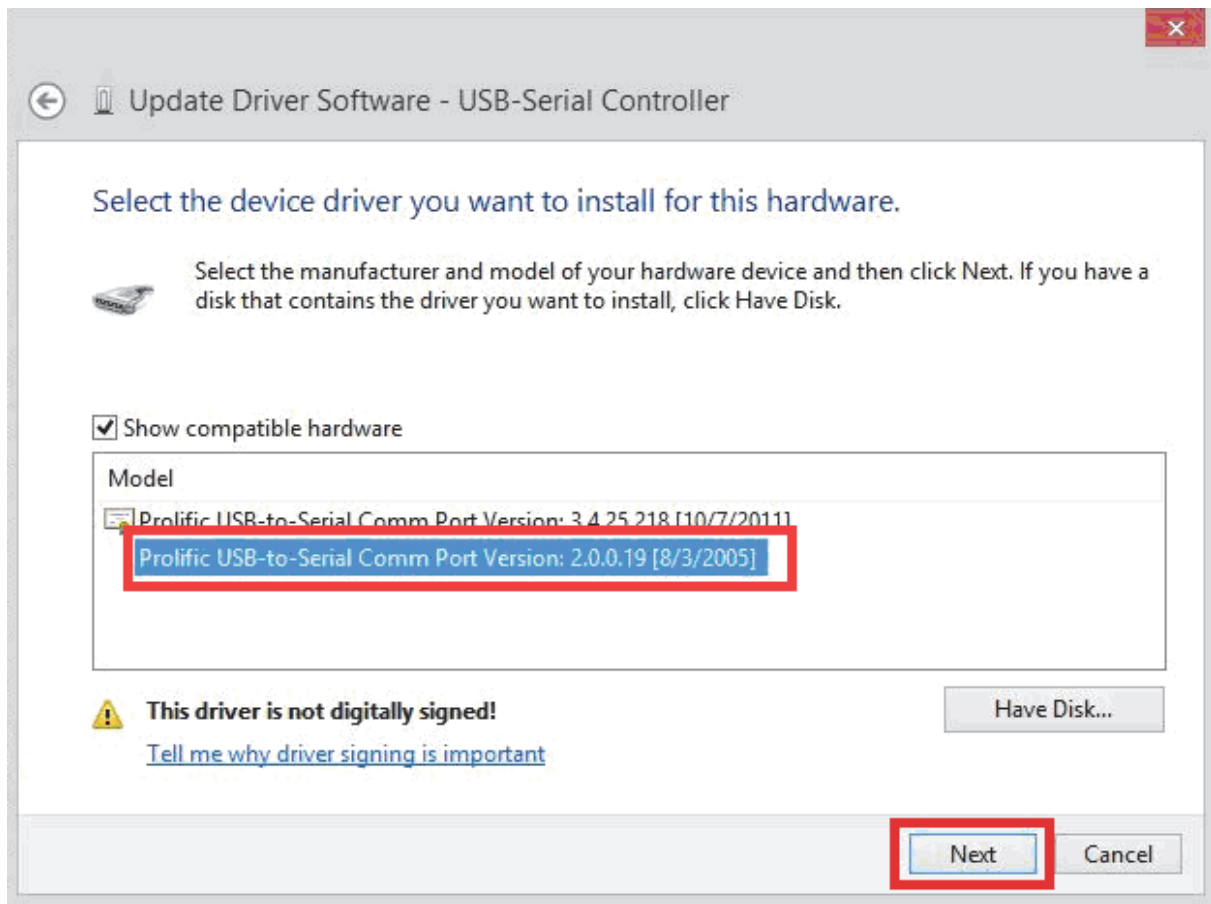


Choose „Browse my computer...”





Choose „Let me pick...“

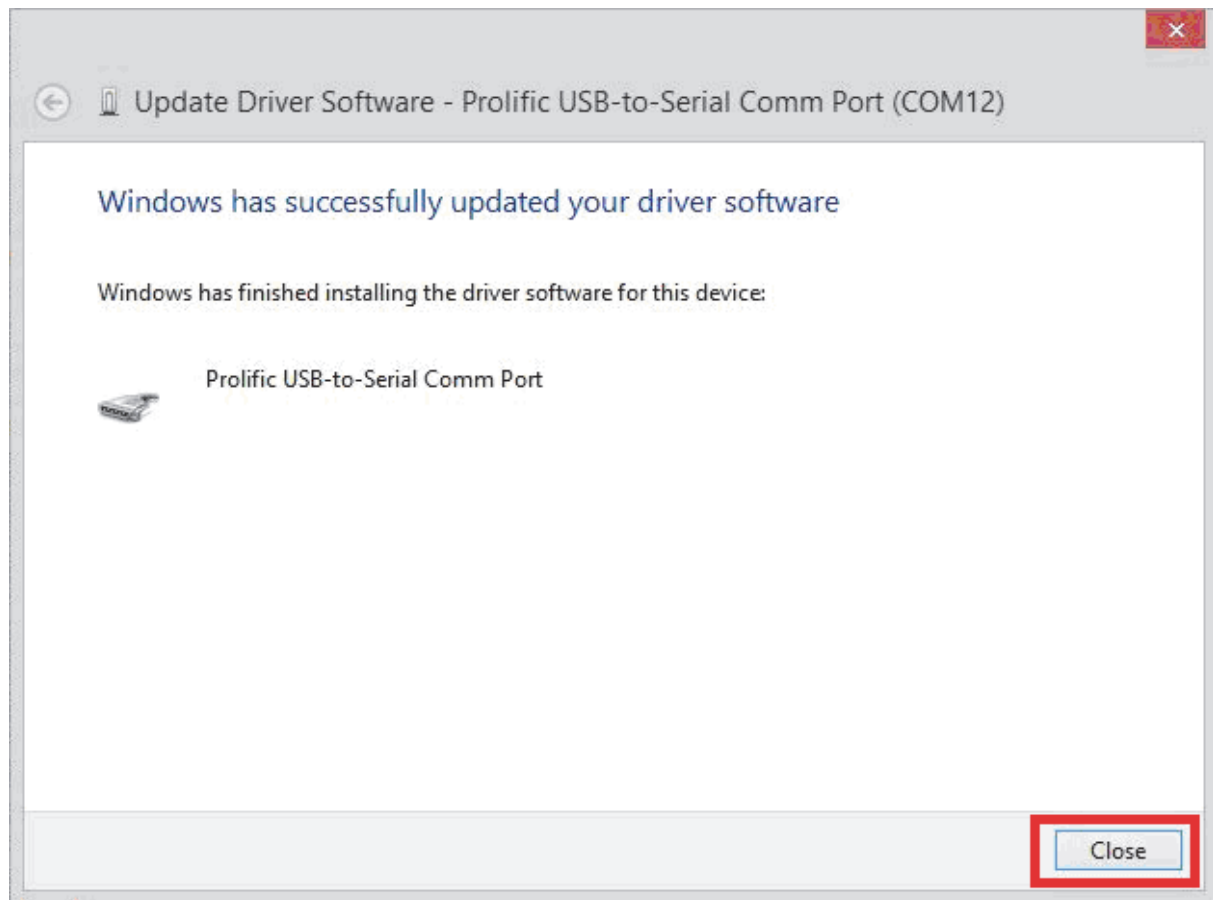


Choose the driver listed above and click on „Next“



**CARTFT.COM**  
Shop for mobile  
PC- and GPS-Solutions

Power Up Your Car

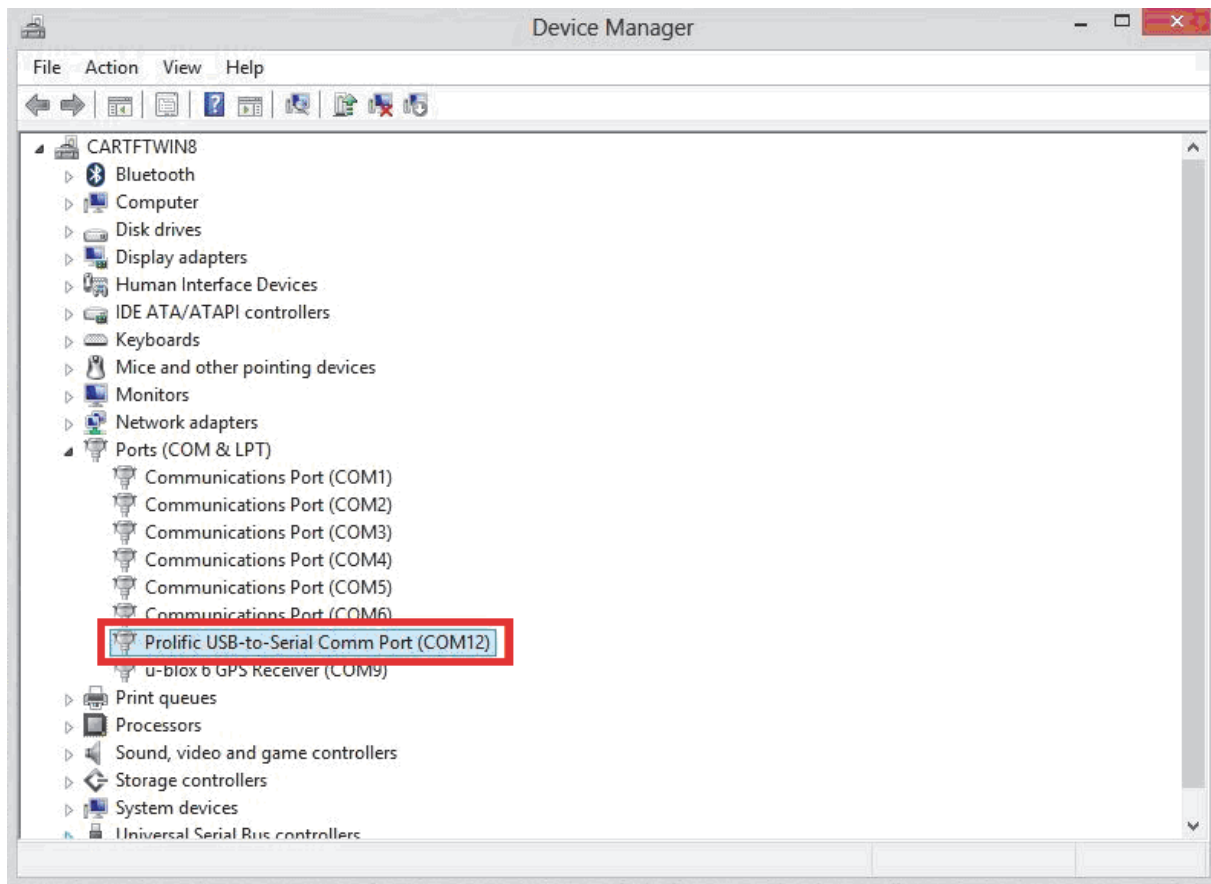






**CARTFT.COM**  
Shop for mobile  
PC- and GPS-Solutions

Power Up Your Car



If it was installed correctly the adapter appears with the COM port number in the device manager.

Jens Hankiewicz  
Date: 27.03.2014