

VFD(L.I.S 2) English Manual

[Introduction](#)

[Control Center Guide](#)

1. [Intro](#)

2. [Skins](#)

3. [Preferences](#)

3-1. [Module Setup](#)

3-2. [Auto User](#)

3-2-1. [User Action](#)

3-3. [A.F.C\(Fan Controller\)](#)

3-3-1. [User Action](#)

3-4. [Message Alarm](#)

3-5. [Time](#)

3-6. [R.T.Clock](#)

3-7. [Cpu/Ram](#)

3-8. [MBM](#)

3-9. [Winamp](#)

3-10. [WMPlayer](#)

3-11. [OS/System](#)

3-12. [e-Mail](#)

4. [Auto Update](#)

I. Introduction

1. What is L.I.S 2?

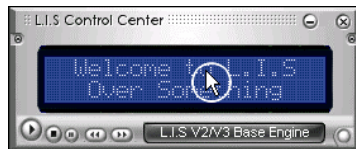
LIS 2 displays various pieces of information through the VFD and LCD windows. This information is related to different components of the PC hardware and software.

II. Control Center Guide

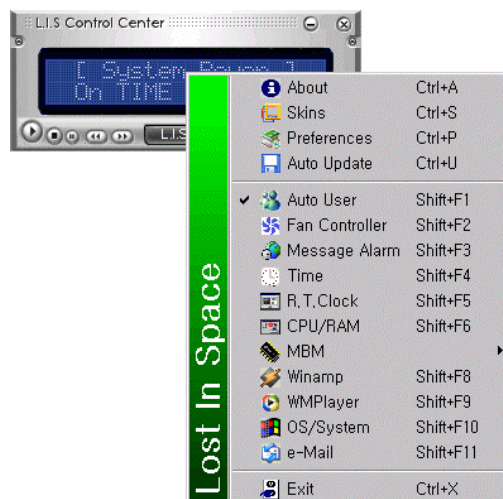
All functions of L.I.S 2 can be managed easily from the Control Center. Because the program has so many features, it might rather be difficult if you are new to L.I.S 2. So please go through the guide carefully.

Intro

To see the extracted menu, hover the mouse pointer on the control center and right click.



The control center features menu will pop up from the control center. We will explain the details of each option in the section below.



- Skins: You can choose the desired Skin from the L.I.S Control Center

- Preferences: This for changing the control center settings and options.

- Auto Update: Update settings and manual update for L.I.S control center, if new updates are available on the Internet.

- Auto User: This feature can organize and order items according to priority.

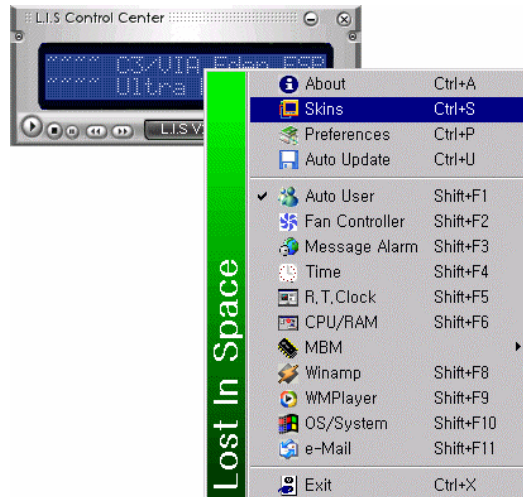
- Fan Controller: This is the software fan controller which allows you to manually adjust the speed settings of your fan.

- Message Alarm: Manage your schedule and organize your appointments with this feature of the control center.

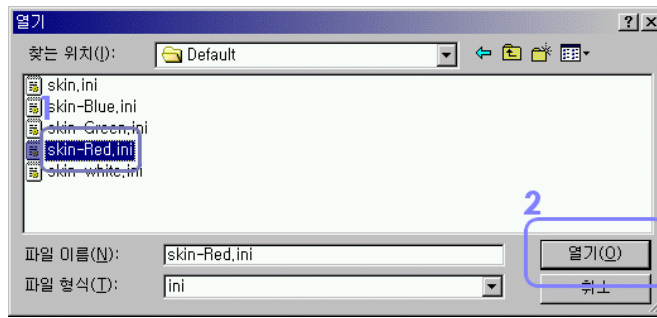
- Time: This displays the current time and date
- R.T.Clock: RTC is a quick display for watching the CPU's running clock.
- CPU/ RAM: Switching to CPU/RAM display will show you the system resource usage on the L.I.S display panel.
- MBM: This will display the information pertaining to the L.I.S 2 voltage, temperature, and RPM respectively.
- Winamp: This feature displays the graphic analyzer on the L.I.S 2 through the Winamp plug-in.
- WMPPlayer: This displays the graphic analyzer on the L.I.S 2 screen through the Windows Media Player plug-in.
- OS/System: It shows the system and O/S information.
- E-mail: L.I.S 2 displays new mail(s) if the user has received any. The control center will check POP3 mail accounts that the user has configured.



There are various Skins to suit your preference.



To change the current Skin, click on the Skins menu.



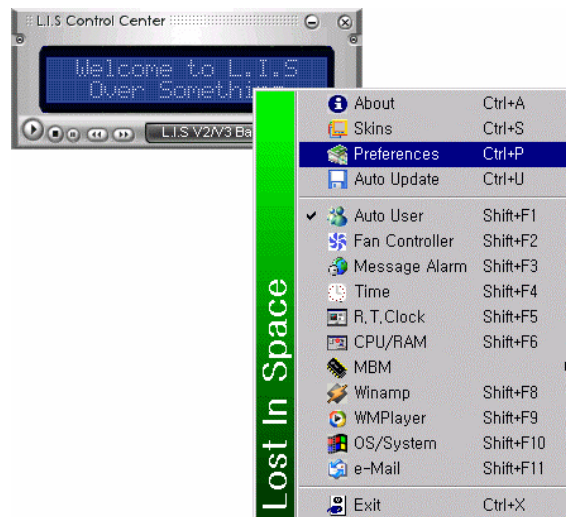
Select a skin, and double click or click the open button.



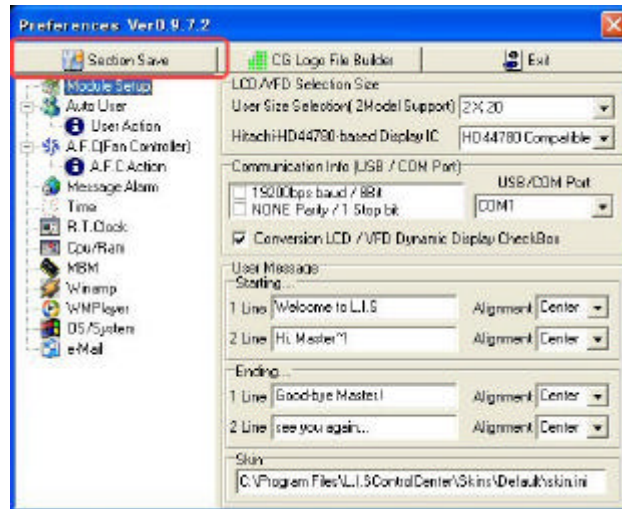
The Skin has been changed

Preferences intro

This preference menu displays the current settings (options) of the Control Center.



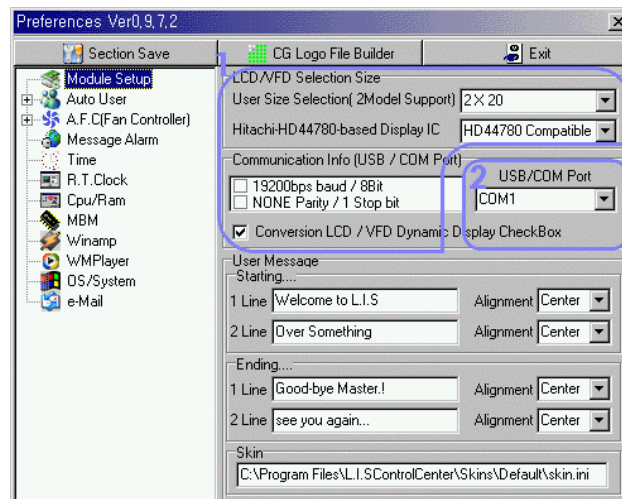
Note – Please be advised that after altering the settings, you must click on 'Section save' to save the settings.



Module Setup

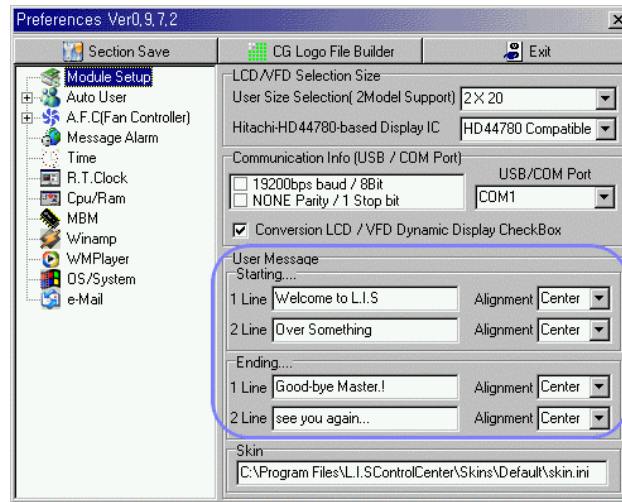
Preferences

Here you can assign the LCD/ VFD module size, the USB/Com port, and change the Starting and Ending Messages to suit your personal preferences.



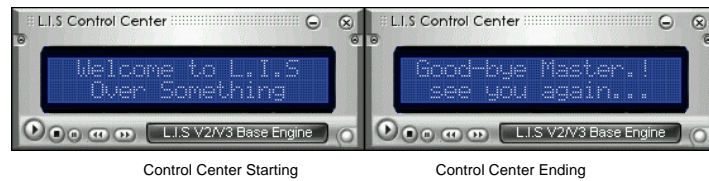
1- LCD/VFD Selection Size: You can select the LCD/ VFD module size, display IC and Speed of USB/Com port. It is probably not necessary to change something except in special cases.

2 - USB/COM Port: After installing the Control Center, it will automatically detect COM ports. However if it encounters any problems, the user can also assign COM ports manually. In most cases this will not be necessary.



User Message: You can write your own starting/ ending messages as well as the alignment type.

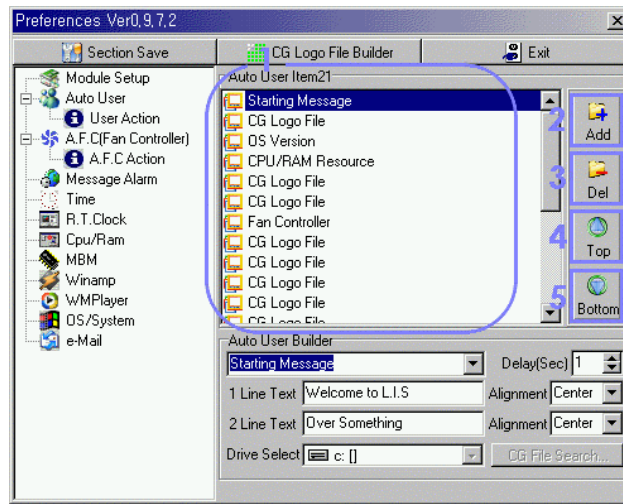
One example is shown above. The L.I.S control panel will display them exactly how you want.



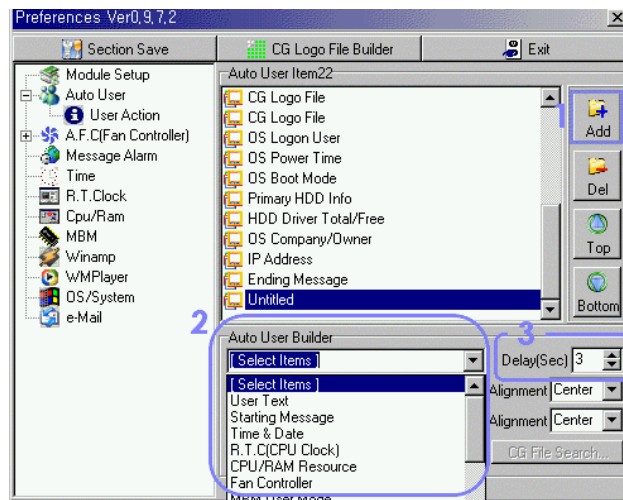
Auto User

Preferences

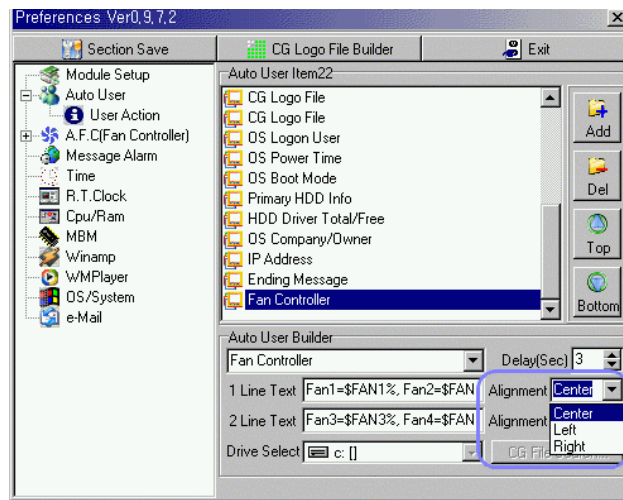
You can use this to order items according to priority. You can also control each display interval per second with this feature.



- 1 - Selecting the table of contents
- 2 - Adding button
- 3 - Deleting button
- 4, 5 - Buttons used for adjusting



- 1 - Push the 'Add' button. Then an item appears as "Untitled" in the Table of Contents...
- 2 - Go to Auto User Builder and use this to select your desired items...
- 3 - Adjust interval time (in seconds) of display.

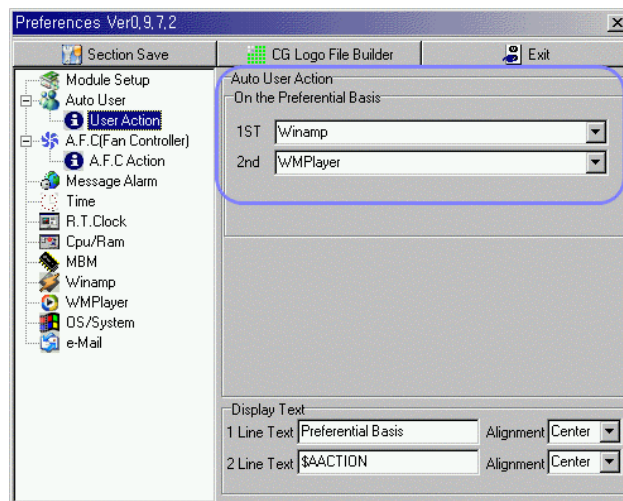


Select the type of alignment you want displayed.

User Action

Preferences

User Action is part of the Auto User option. It is set up to display the graphic analyzer on the L.I.S 2 screen by automatically sensing when Winamp and Windows Media Player are being used.

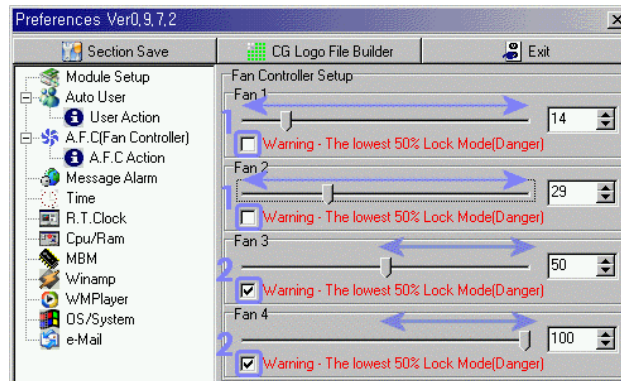


In the case of the settings displayed above with "On the Preferential Basis", if the user is playing Winamp or Windows Media Player, the graphic analyzer will be displayed. Also, priority has been given to Winamp if it is playing simultaneously with Windows Media Player.

A.F.C(Fan Controller)

Preferences

The user can control each 4-Channel fan with the L.I.S 2 Control Center.



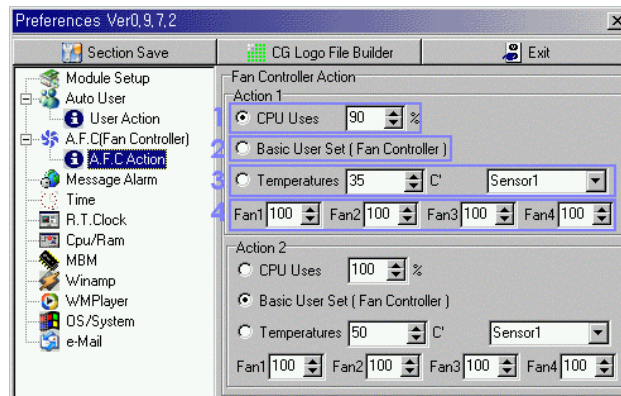
1,2 - 'Warning - The lowest 50% Lock Mode(Danger)' Please keep in mind that you should not set the fans at an excessively low level in case of a high level of heat. The subsequent cooling process will cause damage to the equipment (hardware) involved. If you don't select this lock option, the fan speed can be moved under 50%.

3,4 - If you check this option, the safety range is set between 50% and 100%.

A.F.C Action

Preferences

This menu option makes it possible to protect your system from damage due to overheating by setting special conditions for regulating temperature.

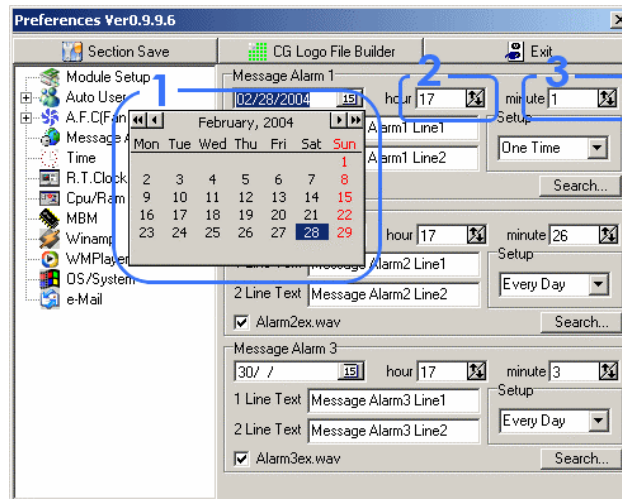


- 1 - In the case of a higher value than setting one of CPU usage, it will operate according to the fan "4" setting.
- 2 - This A.F.C (Fan Controller) operates only at the setting chosen by the user.
- 3 - As compared with inputting temperature through MBM, if the temperature exceeds this temperature setting, it will begin to operate according to the fan "4" setting.
- 4 - This is where the operating value of the fans is set by assessing the conditions of 1 through 3 above.

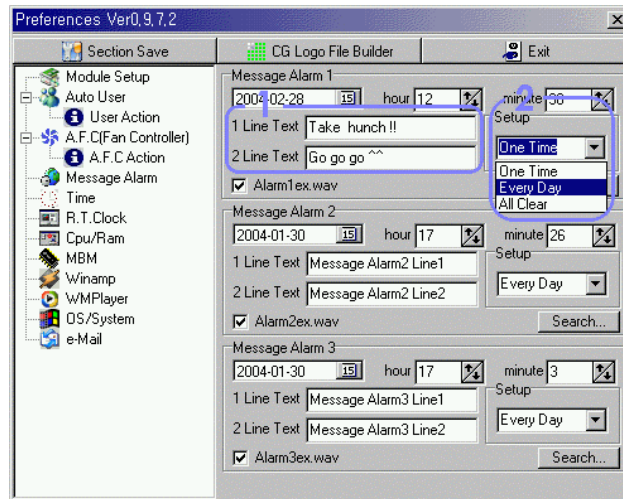
Message Alarm

Preferences

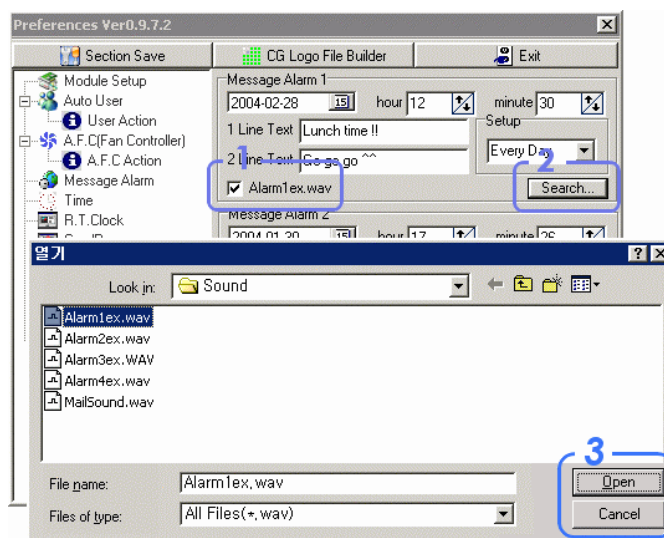
The alarm can be set for an appointed date and time. Also, the user can choose the sound it makes.



- 1 - Select the date that you want the alarm to go off.
- 2, 3 - Then select the hour and minute of the day.



- 1 - Add the sentences which you want displayed on the L.I.S 2 screen.
- 2 - You can set the message alarm's interval to a single instance or every day.



- 1 - When the alarm goes off, check this option if you want the message to be accompanied by a kind of sound.
- 2, 3 - Push the 'search' button and set up the sound file you want accompany the alarm.

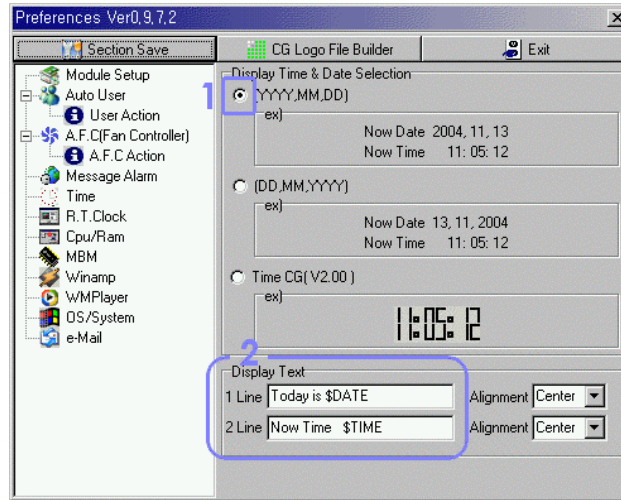
Time

Preferences

This is for selecting the current date and time that you want displayed on the L.I.S 2 screen and Control Center.

Example 1

Let us explain using the following example.



1 - Check YYYY,MM,DD.

2 - Add a couple explanatory statements.



It will be shown as above on the L.I.S 2 screen and Control Center.

Example 2

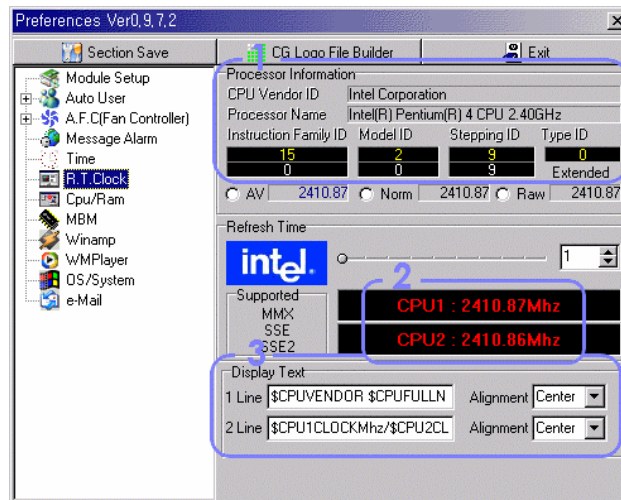
If you simply want a large display of the time, as seen below, select the third option, Time CG.



R.T.Clock

Preferences

RTC displays the CPU's real time clock down to the second decimal at any given moment. Also it can support each R.T.Clock in the case of a Hyper-Threading or dual CPU system.



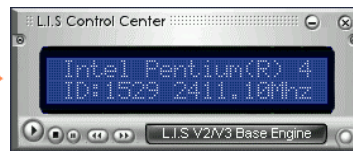
1 – CPU information display.

2 - R.T.Clock display.

3 - This is where the user selects the type that will be shown on the Control Center and L.I.S 2 screen.

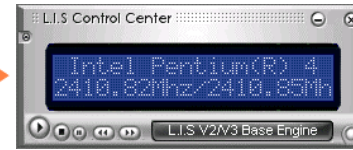
Example 1

Display Text (Single CPU)
 \$CPUVENDOR \$CPUFULLNAME
 ID:\$CPUID \$CPU1CLOCKMhz



Example 2

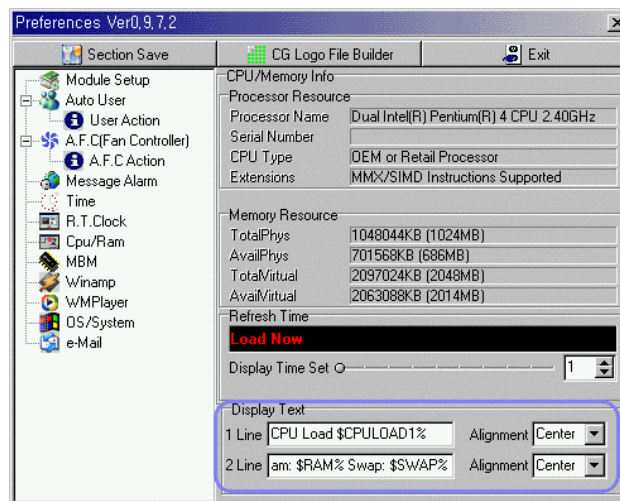
Display Text
(Dual or Hyper-Threading CPU)
 \$CPUVENDOR \$CPUFULLNAME
 \$CPU1CLOCKMhz/\$CPU2CLOCKMhz



Cpu/Ram

Preferences

The CPU/ RAM option shows the usage rate of the CPU and Memory.

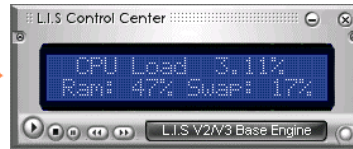


Display Text - It can be set up so as to display them on one screen in the case of a Hyper-Threading or dual CPU system.

Example 1

Display Text (Single CPU)

CPU Load: \$CPULOAD1%
 Ram: \$RAM% Swap: \$SWAP%



Example 2

Display Text

(Dual or Hyper-Threading CPU)

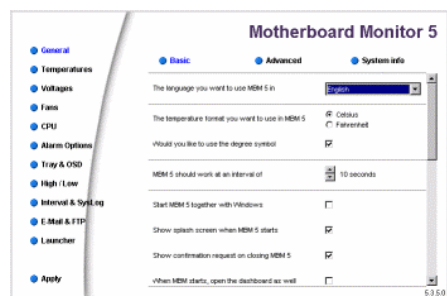
CPU: \$CPULOAD1% \$CPULOAD2%
 Ram: \$RAM% Swap: \$SWAP%



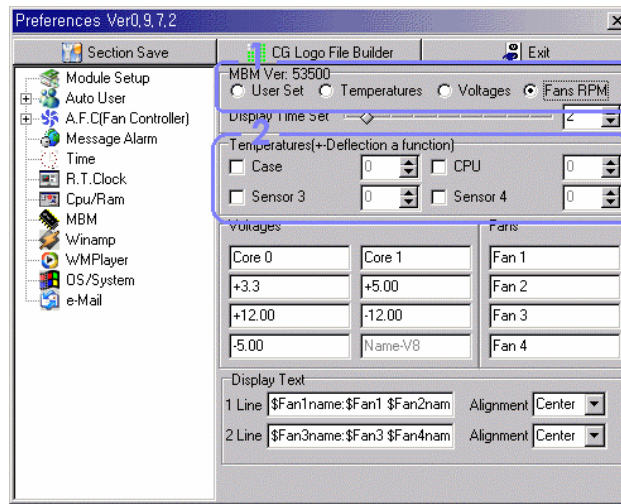
MBM

Preferences

If you install an MBM (Motherboard Monitor), this option shows the MBM's shared data. So the A.F.C can control the fan automatically with this feature.



In order to use this function, an MBM should be installed, and you should test it with this function. If you want to view the website shown above for more information, go to <http://mbm.livewiredev.com>



- 1 – The user can select the type of data he wants received from the MBM.
- 2 – This is where errors received in the MBM data are corrected.



If the MBM is installed properly, voltage and temperature will be displayed on the Control Center and L.I.S 2 screen.

Winamp

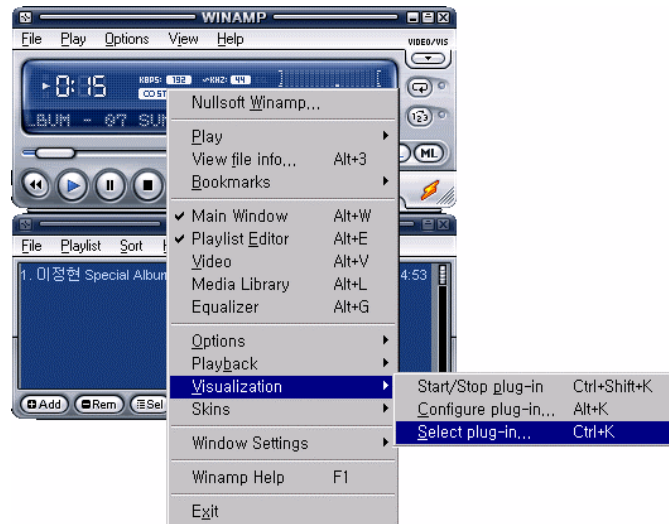
Preferences

The graphic analyzer will be displayed on the L.I.S 2 and Control Center screens if the Winamp plug-in is installed. It supports the 2.x and 5.x versions of Winamp.

If you have installed Winamp before installing Control Center, Control Center will install the plug-in automatically. But if you install Control Center and subsequently install Winamp, then you should manually install the plug-in.

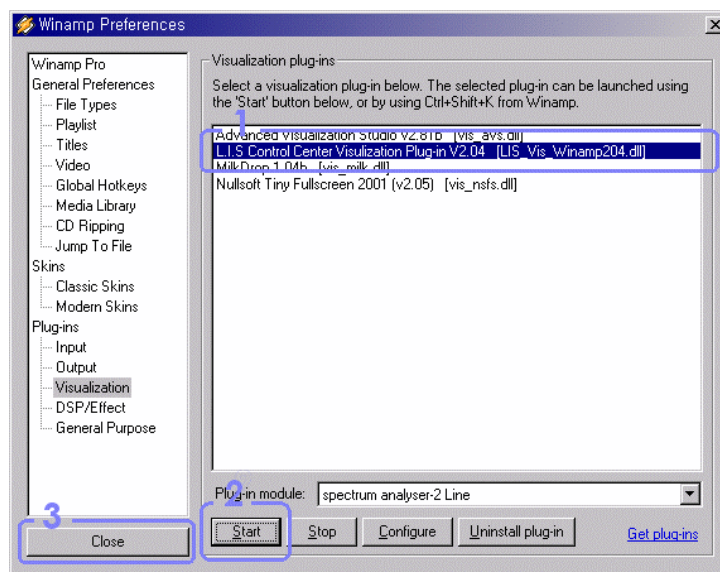
☺ Manual installation of plug-in

The LIS_Vis_Winamp204.dll is found in the plug-in folder (C:\Program Files\L.I.SControlCenter\Plugins). In order to make a path for Control Center, you will need to copy it to the following plug-in folder: (C:\Program Files\Winamp\Plugins).

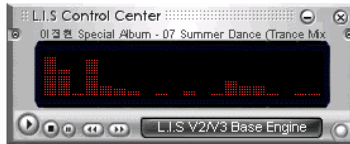


Once you select the visualization plug-in that is now installed, right click the mouse button when the pointer is located on Winamp.

Now select 'Visualization -> Select plug-in...'.



After selecting L.I.S plug-in, push the 'Start' button. Now the graphic analyzer will work. After doing this, close the window.



If the L.I.S plug-in is installed properly, it displays the graphic analyzer on the Control Center and L.I.S 2 screen.

WMPlayer

Preferences

If you want to add the visualization plug-in for Windows Media Player, open its visualization window.

When it is installed into Control Center, copy the plug-in to the Windows Media Player folder. However, Windows Media Player is not registered in the plug-in automatically list, so the plug-in should be added by using the "visualization-option" of Windows Media Player.

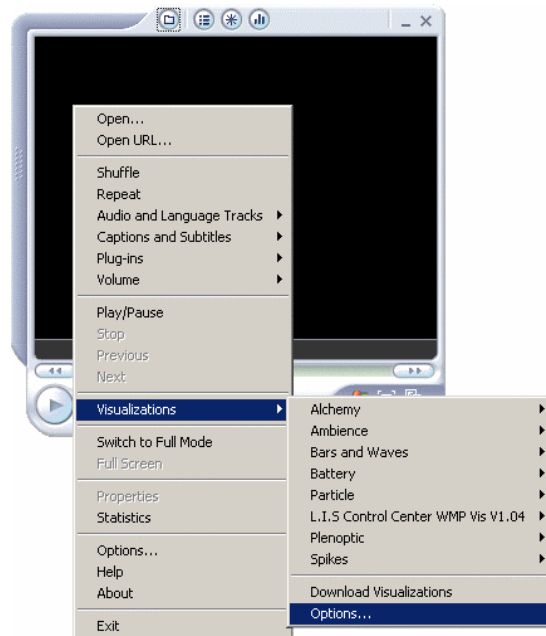
☺ Manual installation of plug-in

If you change the path of installation for Window Media Player, when you add L.I.S 2 plug-in it should be moved to its Control Center folder: (C:\Program Files\L.I.SControlCenter\Plugins). Then select 'LIS_Vis_WMP104.dl'.

If you want the graphic analyzer to be displayed on the L.I.S 2 screen automatically when Windows Media Player is sensed, please do it that using the [User Action](#) feature found under the Auto User option.



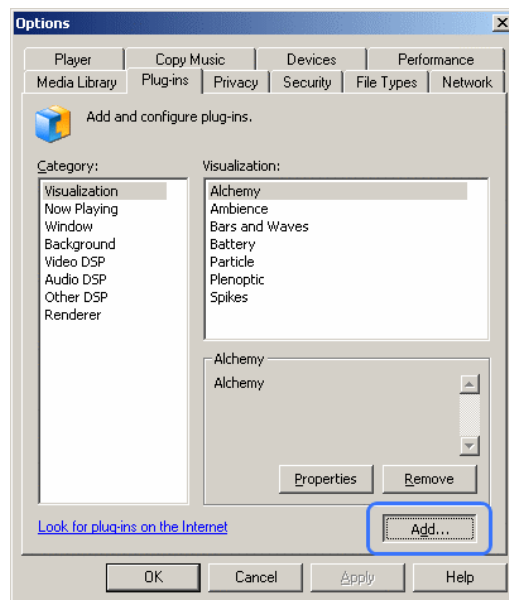
If you want to add visualization plug-in for Windows Media Player, open its visualization window.



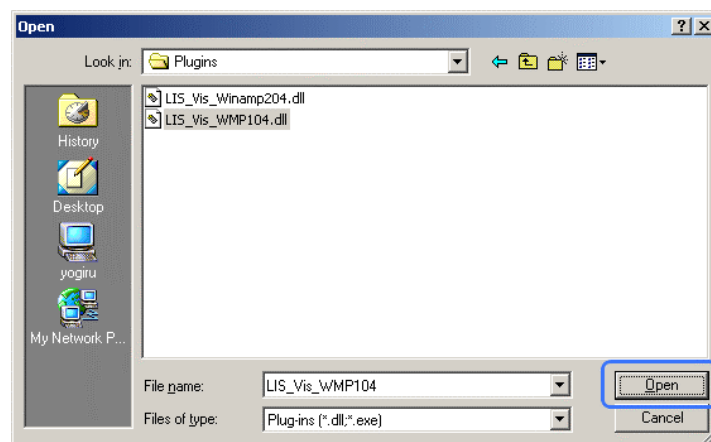
Select the Options menu of Visualizations.



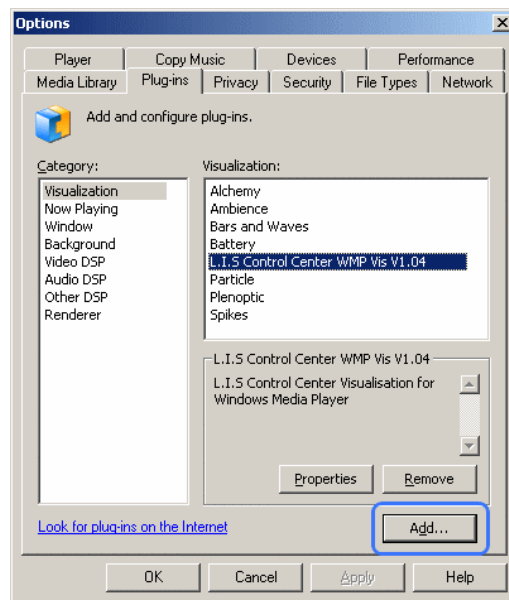
Add the visualization plug-in.



Push the 'Add...' button. Now open the browser.



Select the LIS_Vis_WMP104.dll file which is installed in Control Center, and push the 'Open' button.



If it is installed properly, you will see that "L.I.S Control Center WMP Vis V1.04" has been added to the plug-in list, as shown above.

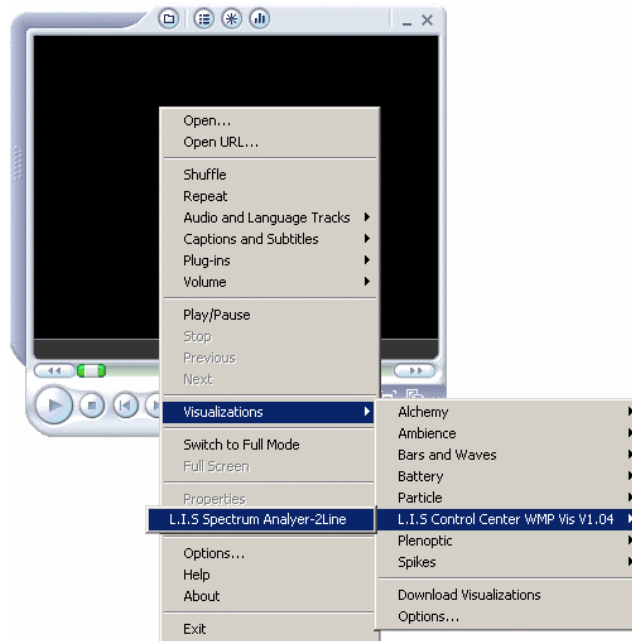


If the installation of the plug-in is finished, then select the L.I.S visualization plug-in in Windows Media Player.

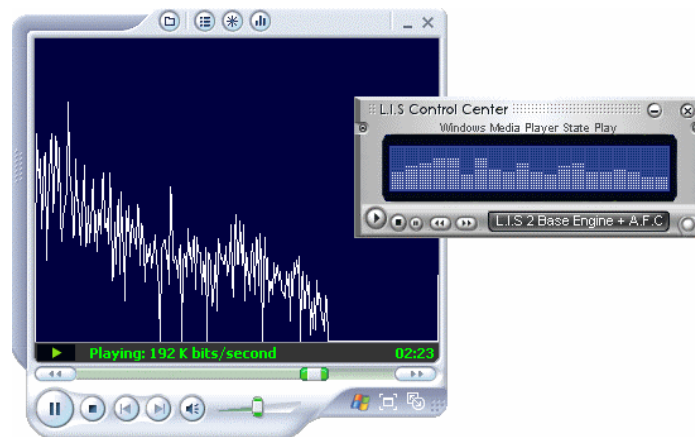


Select another plug-in instead of setting this plug-in to Windows Media Player now.

Push the right mouse button on the position of Windows Media Player, so that the options menu appears.

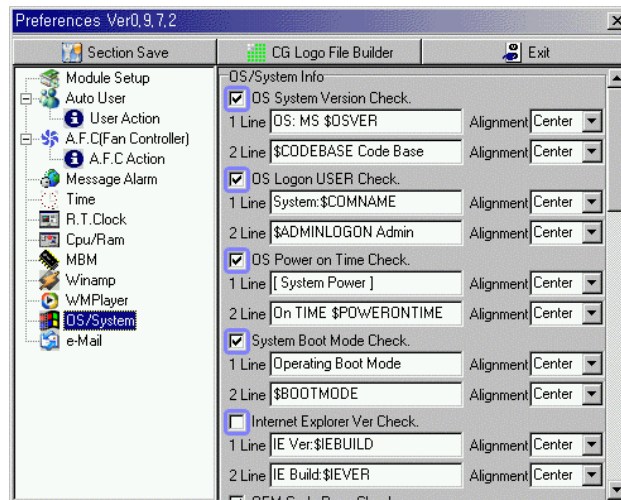


Select L.I.S visualization plug-in as above.

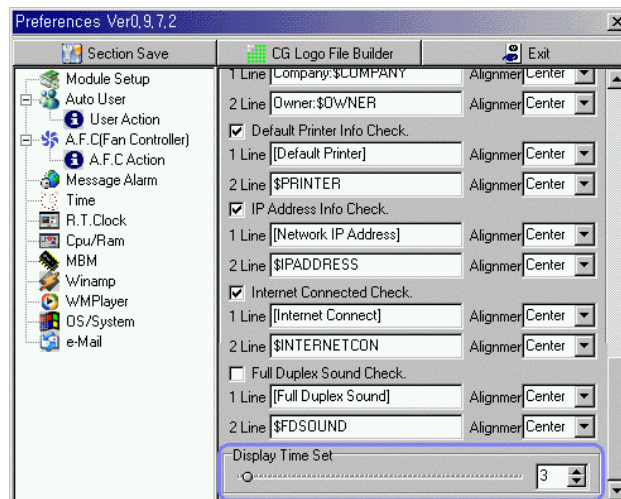


If it works with the L.I.S visualization plug-in, it will display the analyzer on the L.I.S & Control Center screen.

You can use this feature to select information on the User's OS and related System.



It can be setup to display only information relevant to the user by checking the boxes for desired items.

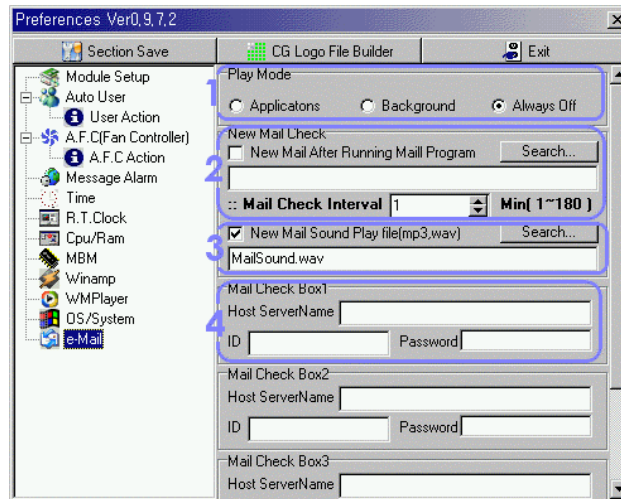


By adjusting the Display Time Set, you can choose how often you want this information to be shown.

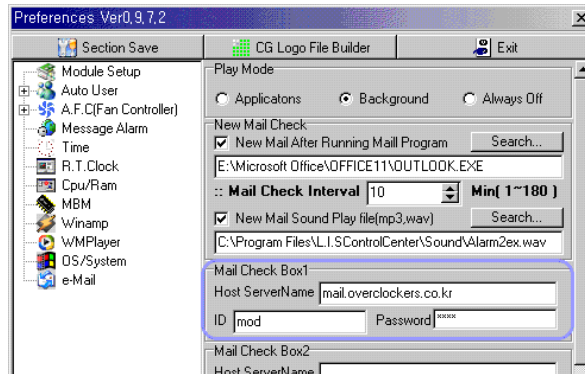
e-Mail

Preferences

L.I.S 2 informs you of newly arrived mail by checking every designated POP3 mail account. When new mail is detected, there is a performance program and sound file.



- 1 - Play Mode: This is used to set the performance mode.
- 2 - The performance program is set, for how often a search is made for new mail.
- 3 - A sound file is assigned here, for when new mail is detected.
- 4 - In this section you assign the POP3 mail accounts that are to be periodically checked.



After adding the information as shown above, the Control Center screen will begin displaying mail info as shown below.



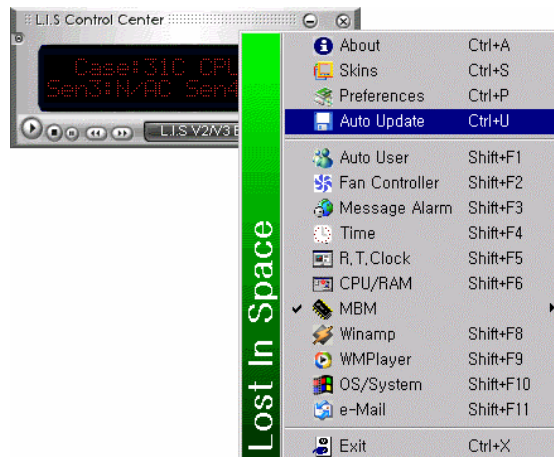
Checking your e-mail



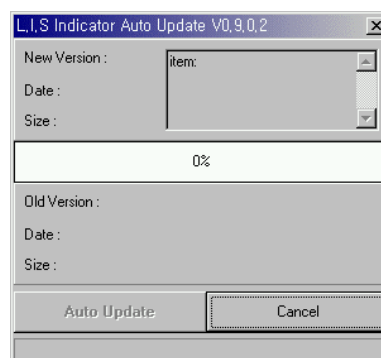
Screen displaying the number of new e-mails

Auto Update

This component of Control Center detects new updates on the Internet, if they are available.



To use it, select Auto Update from the Control Center menu.



If an update is available or needed, then the update is acquired automatically.